

BOOK G

10 CENTS

THE Sweater Book



DESIGNS BY CECILIA VANEK



AMERICAN THREAD COMPANY
260 WEST BROADWAY, NEW YORK, N. Y.





ribbed

SWEATER



SIZE 14-16

MATERIALS REQUIRED. American Thread Co. "Dawn" Germantown Wool.

6 Balls White or Colors

1 Pr. Bone Knitting Needles #4

1 Pr. Bone Knitting Needles #10

1 Bone Crochet Hook #3

6 Buttons

Measurements of Finished Garment.

Bust 32 inches.

Width across back at underarms 15 inches.

Width across back at shoulder 13½ inches.

Length from lower edge to underarm 10 inches.

Sleeves—Length from lower edge to underarm 2½ inches.

Gauge. Large Needles 5 sts=1 inch 6 rows=1 inch

PATTERN. K 3, P 2, repeat to end of row.

2nd row. P 3, K 2, repeat to end of row.

Repeat these 2 rows for entire sweater.

BACK. On #4 needles cast 73 sts and work in pattern for 4 inches. Change to #10 needles and continue work until back measures 10 inches from beginning.

Next 2 rows, bind off 3 sts at the beginning of each row.

Next 10 rows, decrease 1 st at the beginning of each row. Work even until armhole measures 7 inches from the 1st decreasing point.

Next 8 rows. Bind off 4 sts at the beginning of each row for shoulder and bind off remaining sts for back of neck.

FRONT. Cast on 38 sts and work same as back to underarm.

Next row. Bind off 3 sts at armhole edge, then de-

crease 1 st at armhole edge every other row 5 times. Work even until armhole measures 6 inches from 1st decreasing point.

Bind off 5 sts at neck edge, then decrease 1 st at neck edge every row until 16 sts remain. Bind off 4 sts every other row for shoulder. Work other front to correspond reversing the armhole.

SLEEVES. On #4 needles cast on 53 sts and work 1½ inches. Change to #10 needles and work 1 inch even.

Next 2 rows. Bind off 3 sts at the beginning of each row.

Next 8 rows. Decrease 1 st at the beginning of each row and work 3 inches even.

Next 2 rows. Bind off 13 sts at the beginning of each row and work even on 13 sts for 3 inches, bind off. Sew darts at top of sleeves, sew seams and sew sleeves in position.

With wrong side of work toward you, work 4 rows of s c on left front, having 59 s c in each row.

RIGHT FRONT, with wrong side of work toward you work 59 s c down front, turn and work a second row of s c.

3rd row. 1 s c in first 2 s c, * ch 4, skip 4 s c, 1 s c in each of the next 6 s c, repeat from * 4 times, ch 4, skip 4 s c, 1 s c in each of the last 2 s c, turn and work 1 more row of s c working 1 s c in each s c and 1 s c in each ch.

Work 1 row of s c around neck easing it in to fit if necessary.

Sew buttons in position. Finish sleeves with pads if desired. See page 30.

This sweater will be equally attractive made of "Dawn" Knitting Worsted.

Twin SET

SIZE 16-17

MATERIALS REQUIRED. American Thread Co. "Dawn" Shetland Floss. Cardigan—11 Balls, #1621 Spanish Tile. Pullover, 7 Balls, #1619 Lt. Copper. 1 Pr. Bone Knitting Needles #2. 1 Pr. Bone Knitting Needles #1.

Measurements of Finished Garments. Cardigan—Bust 35 inches. Width across back $14\frac{1}{2}$ inches. Length from lower edge to underarm $12\frac{1}{2}$ inches. Sleeve—Length at underarm 17 inches. Pullover—Bust 34 inches. Width across back— $12\frac{1}{2}$ inches.

PATTERN. 1st row. K 4, * P 3, K 4, repeat from * to end of row. 2nd row, K5, P 1 * K 6, P 1, repeat from * to end of row ending with K 5. These two rows form the pattern and are followed for entire sweater. In decreasing and increasing be sure to keep the pattern straight.

BACK. On #2 needles cast on 130 sts. Work even for 1 inch. Next row, decrease 1 st each side, then decrease 1 st each side every 6th row 7 times. Work even until back measures $5\frac{3}{4}$ inches from lower edge. Next row, increase 1 st each side then increase 1 st each side every 8th row 5 times, then every 4th row 6 times (138 sts). Work even until $12\frac{1}{2}$ inches from lower edge.

ARMHOLE. Work 12 sts and slip on a safety pin, work next (114 sts) and slip remaining 12 sts on another safety pin. Decrease 1 st each side every other row 10 times (94 sts). Work even until armhole measures 7 inches. Next two rows bind off 4 sts at the beginning of each row. Next 10 rows bind off 5 sts at the beginning of each row. Change to #1 needles and work in ribbing of K 2, P 2 for 1 inch, bind off.

FRONT. Cast on 137 sts and work same as back until work measures $4\frac{3}{4}$ inches above underarm. Next row, work 40 sts and slip on a st holder, work 21 sts and slip on a st holder for ribbing and continue work on remaining 40 sts. Decrease 1 st at neck edge every 2nd row 11 times. Armhole should now measure 7 inches. Shape shoulder same as back keeping neck edge even. Take up the 40 sts at left side, join yarn at neck edge and work to correspond, do not break yarn.

Front neck ribbing, with #1 needles pick up and K the 23 sts on left neck edge; slip 21 sts for front of neck to a free needle and work across these sts in ribbing (start with P 1, then K 2, P 2). Pick up and K 24 sts on right front neck edge (68 sts), and continue in ribbing until there are as many rows as on back ribbing, bind off. Sew underarm seams and neck ribbing.

Right armhole ribbing. Slip 12 right underarm sts at back to size #1 needle and K 2, P 2 on the 12 sts, pick

up and K 18 sts on shaped armhole edge, 88 sts on even edge of back and front armhole, 18 sts on shaped edge. Slip the 12 sts from safety pin to a free needle and work across all sts in ribbing until there are the same number of rows as in neck ribbing. Work other armhole to correspond.

CARDIGAN

Work in same pattern as Pullover.

BACK. Cast on 123 sts and work same as back of Pullover to underarm.

Next 2 rows, bind off 5 sts at the beginning of each row, then decrease 1 st at the beginning of next 10 rows. Work even until armhole measures 7 inches. Bind off 5 sts at the beginning of next 12 rows and bind off remaining sts for back of neck.

FRONT. Cast on 67 sts and work even for 1 inch. Next row, decrease 1 st at underarm edge and decrease 1 st at underarm every 7th row 4 times. Work even until front measures $5\frac{3}{4}$ inches. Next row, increase 1 st at underarm then increase 1 st every 7th row 5 times, then every 4th row 6 times. Work even until front measures $12\frac{1}{2}$ inches from lower edge. Next row, bind off 11 sts at underarm. Next row, decrease 1 st, at neck edge. Next row decrease 1 st at underarm, continue decreasing at underarm every other row until 11 decreases have been made, continuing to decrease at neck edge every 4th row. Work armhole edge even and continue neck decrease until armhole measures 7 inches. Shape shoulders same as back, continue decreasing until 21 sts have been decreased then work neck edge straight. Work other front to correspond.

SLEEVES. Cast on 53 sts, work even for 2 inches. Next row, increase 1 st each side then increase 1 st each side every 7th row 21 times. Work even until work measures 18 inches from beginning. Next 2 rows, bind off 8 sts at the beginning of each row then decrease 1 st each side of every other row 6 times. Work even until $4\frac{1}{4}$ inches from 1st decreasing point. Next 2 rows, bind off 22 sts at the beginning of each row and work on remaining sts for $2\frac{1}{2}$ inches. Bind off remaining sts and work other sleeve to correspond.

Sew seams. Sew darts in sleeves and sew sleeves to armholes.

BUTTONHOLE BORDER. Join yarn at lower edge of left front on right side of work, 1 s c in each st at lower edge and 3 s c in corner, 104 s c on right front to beginning of neck shaping (about 5 s c every 7 rows), 3 s c in corner, 62 s c to shoulder, 34 s c across back neck edge, work s c on other front to correspond, join. (Continued on page 30)



Cardigan with hood

SIZE 14-16

MATERIALS REQUIRED. American Thread Co. "Dawn" Knitting Worsted.

11—2 oz. Skeins Spanish Tile or any Color desired. 1 Pr. Bone Knitting Needles #7. 1 Bone Crochet Hook #4 or 5. 7 Buttons.

Measurements for Finished Garment. Bust 34 inches. Width across back at shoulder $13\frac{1}{2}$ inches. Length from lower edge to underarm $15\frac{3}{4}$ inches. Sleeves—Length from lower edge to underarm, 17 inches.

Gauge. 10 sts=2 inches 14 rows=2 inches

PATTERN. A multiple of 4 sts plus 1.

K 3, P 1, repeat from beginning to end of row ending with K 1. Repeat this row for entire cardigan.

BACK. Cast on 93 sts and work in pattern until back measures $15\frac{1}{2}$ inches.

Next 6 rows. Bind off 4 sts at the beginning of each row. Work even until armhole measures 7 inches from the first decreasing point.

Next 10 rows. Bind off 4 sts at the beginning of each row and bind off remaining sts for back of neck.

FRONT. Cast on 49 sts and work in pattern for $15\frac{1}{2}$ inches.

Next 6 rows. Bind off 4 sts at beginning of every other row for armhole. Work even until front measures $4\frac{1}{2}$ inches from the 1st decreasing point then bind off 4 sts at neck edge every other row 3 times. Work even until underarm measures 7 inches from the 1st decreasing point.

Next 8 rows, beginning at underarm, bind off 5 sts at the beginning of every other row and bind off remaining 5 sts. Work other front to correspond.

MATERIALS REQUIRED. American Thread Co. "Dawn" Knitting Worsted, Shaded Blues, Pinks, Reds, Oranges, Greens, Browns, Violets, or Solid Colors. 2, $1\frac{3}{4}$ or 2 oz. Skeins, or 1, 4 oz. Skein. 4 double pointed Steel Knitting Needles No. 14.

Gauge 7 sts=1 inch.

Cast on 48 sts. 16—16—16. K 2, P 2 (ribbing) for 3 inches.

Next round starts the thumb, K 1, K 2 sts in next st, K to within the last 2 sts on 3rd Needle, K 2 sts in next st, K 1. K 3 rounds even.

Next round. K 2, K 2 sts in next st, K to within last 3 sts of 3rd needle, K 2 sts in next st, K 2. K 3 rounds even. Continue increasing in same manner every 4th round until there are 18 sts between increasing points.

SLEEVES. Cast on 53 sts and work even for 17 inches.

Next 2 rows. Bind off 5 sts at the beginning of each row. Work even until sleeve measures $5\frac{1}{2}$ inches from the 1st decreasing point.

Next 6 rows. Bind off 5 sts at the beginning of each row and bind off remaining sts.

POCKETS. Cast on 17 sts and work in pattern for 4 inches, bind off. Crochet 3 rows of s c around three sides of pockets working 3 s c in corners sts of each row.

HOOD. Cast on 5 sts and work in pattern as follows: Work 1 row even.

Starting in next row. Cast on 4 sts at same edge 8 times working other edge even (front edge). Work 7 inches even.

Starting next row, decrease one st at back edge every row 7 times, work 4 rows even.

Beginning in next row, increase 1 st at back edge every row 7 times working front edge even.

Work 7 inches even then bind off 4 sts at back edge 8 times and bind off remaining sts.

Sew back seam of hood. Pick up about 72 sts around lower edge of hood and work $2\frac{1}{2}$ inches in ribbing of K 2, P 2. Bind off.

Pick up 78 sts around front of hood and work 3 rows of ribbing, bind off. Sew seams. Baste pockets in position placing the lower edge at lower edge of fronts and matching patterns, work a row of s c around entire edge.

Next row, work buttonholes on right front as follows: beginning at neck * ch 3, skip 3 sts, s c for $2\frac{1}{4}$ inches, repeat from * down edge.

On next row, work s c over ch sts of buttonholes. Work 2 more rows of s c on left front.

Buy or make shoulder pads if desired. See page 30. This cardigan will be equally attractive made of "Dawn" Germantown Wool.

MITTENS

K one round. Slip 18 thumb sts on a thread, cast on 4 sts over thumb, K one round.

Next round, K 2 sts together at the beginning and end of 4 cast on sts. K even for $3\frac{1}{4}$ inches, then K 2 sts together at the beginning and end of each needle. K one round. Continue decreasing in this manner every other round until 2 sts remain on each needle, draw yarn through these sts and fasten firmly.

THUMB. Pick up 18 thumb sts and 4 gusset sts, on three needles decrease gusset same as on hand. Divide sts—6—7—7 and work 2 inches even then decrease same as end of mitten. Work other mitten to correspond.

These Mittens may also be made in "Dawn" Germantown Wool.



SIZE 14-16

MATERIALS REQUIRED. American Thread Co. "Dawn" Shetland Floss.

7—1 oz. Balls White or Colors.

1 Pr. Bone Knitting Needles #3.

1 Crochet Hook #3

1—6 inch Zipper

Measurements for Finished Garment.

Bust 33 inches.

Width across back 13½ inches.

Length from lower edge to underarm—12 inches.

Sleeves—Length from lower edge to underarm 4¼ inches.

Gauge: 7 sts = 1 inch

10 rows = 1 inch

BACK. Starting at lower edge, cast on 93 sts. **1st row.** K 5, P 3 across row ending with P 3, K 5. **2nd row.** (Right Side) P 5, K 3 across row ending with K 3, P 5. Repeat these 2 rows alternately for 6", and after 1½" increase 1 st at both ends then increase every 1" until there are 103 sts on needle. Start your pattern and keep increasing every inch until there are 111 sts. With right side of piece toward you, work in pattern as follows: **1st row.** P 2, *K 3, yarn around needle, P 5. Repeat from * across row ending with K 3, yarn around needle, P 2. **2nd row.** K 2, *P 4, K 5. Repeat from * across row ending with P 4, K 2. **3rd row.** P 2, *K 1, K 2 together, y.o., K 1, P 5. Repeat from * across row ending with K 1, K 2 together, y.o., K 1, P 2. **4th row.** K 2, *P 2, P 2 together, K 5. Repeat from * across row ending with P 2, P 2 together, K 2. **5th row.** P 1, increase in next st., *K 1, y.o., K 2 together, P 5. Repeat from * across row ending with K 1, y.o., K 2 together, P 2. **6th row.** K 1, increase in next st., *P 3, K 5. Repeat from * across row ending with P 3, K 3. **7th row.** P 3, *y.o., K 3, P 5. Repeat from * across row ending with y.o., K 3, P 3. **8th row.** K 3, *P 4, K 5. Repeat from * across row ending with P 4, K 3. **9th row.** P 3, *K 1, y.o., K 2 together, K 1, P 5. Repeat from * across row ending with K 1, y.o., K 2 together, K 1, P 3. **10th row.** K 3, *P 2 together, P 2, K 5. Repeat from * across row ending with P 2 together, P 2, K 3. **11th row.** P 3, *K 2 together, y.o., K 1, P 5. Repeat from * across row ending with K 2 together, y.o., K 1, P 3. **12th row.** K 3, *P 3, K 5. Repeat from * across row ending with P 3, K 3. These 12 rows form the pattern, and are repeated except that the increases are omitted in the 5th and 6th rows. To shape armholes: When work measures 12 inches from beginning, bind off 3 sts at beginning of next 2 rows.

(Continued on page 30)



Eyelet
**CABLE
PATTERN**

SIZE 14-16

The tufted Bolero may be made on a large mesh Fish net, Point d'esprit net or a Crocheted Filet Mesh.

When made on the Fish net or Point d'esprit net $\frac{3}{4}$ of yard of either material and a paper pattern are required. The Bolero is cut out according to pattern and sections are worked before they are assembled.

Directions for Tufting—Cut a card board $1\frac{1}{8}$ inches wide, wind yarn around the card board placing the strands side by side, cut both edges having $1\frac{1}{8}$ inch lengths. Use 12 strands for each tuft. Thread a length of yarn into a large needle and working over the crossings of meshes from right to left, tie a tuft securely over every other mesh in every other row, alternating, placing the tuft of 2nd row between the tufts of preceding row. If tufted over point d'esprit net work over each dot.

MATERIALS REQUIRED. American Thread Company "Dawn" Germantown Wool for tufting, 7 balls, White or Colors.

"Star" Mercerized Crochet Cotton size 20 for Filet Mesh, 2 large or 4 Medium Balls. Steel Crochet Hook No. 10 or 11.

Directions for Crocheted Filet Mesh

Gauge. 3 meshes=1 inch

3 rows=1 inch

BACK. Ch 187 (about 19 inches) tr c into 11th st from hook * ch 3, skip 3 sts, tr c in next st, repeat from * across row (work should measure about $15\frac{1}{2}$ inches), ch 7, turn. **2nd row.** Tr c in tr c, * ch 3, tr c in next tr c, repeat from * across row, ch 7, turn. **3rd row.** Repeat 2nd row, increasing 1 mesh each side. Work 2 rows even then increase 1 mesh each side and work even until back measures 5 inches. **Next row.** Sl st across 1 mesh, ch 4, tr c in next tr c (thus decreasing 2 meshes), continue across row omitting the last 2 meshes. **Next 2 rows.** Decrease 1 mesh each side and work even until armhole measures 7 inches from the 1st decreasing point. **Next 3 rows.** Decrease 4 meshes each side of each row.

FRONT. Ch 99, work 1 st tr c in 11th st from hook, work meshes across row and work 1 more row even. **3rd row.** Increase 1 mesh at end of row (this is the underarm) then work 2 rows even. **Next row.** Increase 1 mesh at underarm then work even for 8 rows or until front measures 5 inches. **Next row.** Decrease 2 meshes at underarm. **Next 2 rows.** Decrease 1 mesh at underarm and work even for 12 rows or until work measures $5\frac{1}{2}$ inches from 1st decreasing point. **Next row.** Decrease 4 meshes at neck edge. **Next 3 rows.** Decrease 1 mesh at neck edge. **Next 2 rows.** Decrease 4 meshes at shoulder edge and 1 mesh at neck edge.

SLEEVES. Ch 151 for 36 meshes and work 2 rows even. **Next row.** Increase 1 mesh each side and work even for 6 rows or until sleeve measures $3\frac{1}{4}$ inches. **Next row.** Decrease 2 meshes each side then decrease 1 mesh each side every other row 5 times. **Next row.** Decrease 6 meshes each side and work 5 more rows even. Sew darts to form square shoulder.

tufted
BOLERO







Permitted COAT

SIZE 14-16

MATERIALS REQUIRED. American Thread Co. "Dawn" Knitting Worsted.

13—2 oz. Skeins White or Colors.

1 Pr. Bone Knitting Needles #7.

1 Bone Crochet Hook #5.

Measurements of Finished Garment.

Bust 35 inches.

Width across back 14 inches.

Length from lower edge to underarm 22 inches.

Sleeves—Length from lower edge to underarm 16 inches.

Pattern Stitch. Multiple of 9 plus 4.

1st row. ** P 4, K 1, * K second st on left needle inserting needle in back thread of st and without slipping this st from needle, K the first st on left needle in usual manner and slip them both off together, * repeat between single stars once more, ** repeat between double stars across row. **2nd row.** Purl across entire row. **3rd row.** ** P 4, * K second st on left needle inserting needle in back thread of st and without slipping this st from needle, K the first st on left needle in usual manner and slip them both off together, * repeat between single stars once more, K 1, ** repeat between double stars across row. **4th row.** Purl across entire row.

These 4 rows form the pattern stitch. The entire coat is worked in pattern.

BACK. Cast on 112 sts. Work 3 inches even in pattern st (about 24 rows). **Starting on next row,** decrease 1 st each side every 3 inches 7 times. Work 1 each even (about 8 rows). **Next 4 rows.** Bind off 2 sts at the beginning of each row. **Starting on next row,** decrease 1 st each side of every 3rd row 9 times. Work 3½ inches even, (about 28 rows). Armhole should measure about 7 inches.

SHOULDERS. Bind off 4 sts at the beginning of next 8 rows, then 3 sts at the beginning of next 4 rows (22 sts bound off for each shoulder). Bind off remaining 28 sts for neck.

RIGHT FRONT. Cast on 63 sts. Work 3 inches even in pattern st having a K rib at front edge (about 24 rows). **Starting on next row** decrease 1 st at underarm

edge every 3 inches 7 times. Work 1 inch even. (About 22 inches long at underarm.)

SHAPING ARMHOLE AND STARTING NECKLINE. **Next 4 rows.** Bind off 3 sts every other row at underarm side. **Starting on next row,** decrease 1 st at same side every 3rd row, 8 times. Work 2¾ inches even (about 22 rows). Then bind off 3 sts beginning next 4 rows at front for neck and working even at armhole edge. (Armhole about 7 inches deep with 30 sts left on needle.)

SLANTING SHOULDER AND CONTINUING NECKLINE. **Next 8 rows.** Bind off 4 sts every other row at armhole side, **next 4 rows** bind off 3 sts at same side for shoulder, while decreasing at neck edge 1 st every other row 6 times. Bind off remaining sts.

LEFT FRONT. Work to correspond to right front being careful to reverse pattern (start with K 1 * K second st).

SLEEVE. Cast on 58 sts. Work 3 inches even in pattern st. **Starting on next row,** increase 1 st at both sides every inch 6 times, then every 2 inches 3 times. Work 2 inches even (about 16 rows). (Sleeve about 16 inches long at underarm.) Bind off 3 sts beginning next 4 rows. **Starting on next row,** decrease 1 st at both sides every 3rd row 14 times (36 sts left on needle). Then bind off 11 sts beginning next 2 rows (14 sts left on needle). Work 2 inches even in pattern. Bind off.

Work second sleeve to correspond.

POCKET. Cast on 22 sts. Work in pattern for 4½ inches, having a K rib at both edges. Bind off. Make 4 pockets alike.

FINISHING AND ASSEMBLING. After pressing each piece separately, sew seams neatly, sew darts in sleeves. Fit sleeves into armholes. Sew pockets in place. Then crochet a band of s c about 1 inch wide all around front and neck edges. At corners of neck in the first row, work 3 s c in corner st, following 3 rows, 2 sts in corner st, last row, 1 s c in s c.

Finish with shoulder pads if desired. See page 30.

This coat will be equally attractive made of "Dawn" Germantown Wool.



MATERIALS REQUIRED. American Thread Company "Dawn" Saxony Yarn. 4 Balls—#1844 Scarlet. 8 Balls—#1830 Jockey Green. 1 Ball—#1823 Primrose. Bone Crochet hook #0 or steel crochet hook #4. 1 Tapestry Needle.

With Scarlet ch 244 for 120 meshes, work 1st d c in 6th ch from hook, * ch 1, skip 1 st, d c in next st, repeat from * to end of row, ch 4, turn. **2nd row**, d c in d c, * ch 1, d c in next d c, repeat from * to end of row and repeat 2nd row for entire square in the following color scheme, * 5 rows Scarlet, 1 row Primrose, 5 rows Scarlet, 5 rows Jockey Green, repeat from * until shawl is square.

Thread yarn in a tapestry needle and begin weaving over one mesh and under next mesh and reversing in the next row. Follow same color scheme as used in meshes. Around entire shawl with Jockey Green work 11 rows of d c working 3 d c in each corner st of each row, then work 1 row of 2 ch meshes all around.

Fringe: with Jockey Green, cut 14 inch strands, take 4 strands double these and knot in mesh. Repeat in each mesh.

The shawl may also be made with "Dawn" Shetland Floss.

Plaid SHAWL



SIZE 16

MATERIALS REQUIRED. American Thread Company "Dawn" Saxony Yarn. 3 Balls White or Colors. 1 Pr. Bone Knitting Needles #3. 3 Buttons. Gauge 6 sts=1 inch. 11 rows=1 inch.

Cast on 52 sts.

1st and 2nd rows, * K 2, P 2, repeat from * to end of row. **3rd and 4th rows,** P 2, K 2, repeat from * to end of row. These 4 rows form the pattern and are followed throughout. Work 14 inches even. **Next row** cast on 50 sts and work even for 11 inches. **Next row,** bind off the 50 cast on sts and work even for 14 inches ending at straight edge. **Next row,** begin band which is worked in garter or plain K sts, K across sts on needle, cast on 5 sts, pick up 82 sts across lower edge of back, cast on 5 sts, pick up 52 sts at lower edge of other front and K 31 more rows, bind off. On right front, starting at lower edge of band, crochet 3 s c, * ch 12 for loop, 5 s c, repeat from * ch 12, s c over next st, s c over next st, ch 3, s c in same st, skip about 1/4 inch s c over next st, ch 3, s c in same st and repeat scallop all around to band and work s c across band. Work scallop around armholes and attach buttons.

The vestee will be equally attractive made of "Dawn" Shetland Floss.

Vestee

Filet mesh and weaving—a pleasing color combination in plaid — smartly styled



SIZE 16

MATERIALS REQUIRED. American Thread Co. "Dawn" Saxony Yarn.
 5 Balls #1829 Sport Green.
 5 Balls #1834 Camels Hair.
 3 Balls #1816 Rosewood.
 1 Bone Crochet Hook #0 or Steel Crochet Hook #4.
 1 Tapestry Needle.

Measurements of Finished Garment.

Bust 34 inches.

Width across back 14 inches.

Length from lower edge to underarm 14 inches.

Length of sleeve at underarm 5½ inches.

Gauge. 9 meshes=2 inches 8 rows=2 inches

The background of blouse is worked in filet mesh.

To decrease at beginning of row, sl st across the number of meshes to be decreased, ch 4 and continue row. To decrease at end of row, omit the number of meshes to be decreased. To increase at beginning of row, ch 6, turn and d c in 1st d c of previous row. To increase at end of row, ch 1, tr c into same space with last d c made.

BACK. With Camels Hair ch 164 (about 19 inches) d c in 8th st from hook, * ch 1, skip 1 st, d c in next st, repeat from * to end of row (80 meshes about 17 inches) ch 4, turn. **2nd row**, d c in d c, * ch 1, d c in next d c, repeat from * across row and repeat 2nd row for entire blouse in the following color scheme, * 4 rows Camels Hair, 2 rows Rosewood, 7 rows Sport Green, 1 row Rosewood, 1 row Camels Hair, 1 row Rosewood, 2 rows Sport Green, repeat pattern from * working 16 rows even. ***Next row**, decrease 1 mesh each side and work 3 rows even, repeat from * 3 times. **Next row**, increase 1 mesh at each end then increase 1 mesh at each end every 4th row 3 times and work 13 rows even. (Work should end with 4 rows Camels Hair.) **Next row**, decrease 3 meshes at each side. **Next 4 rows**, decrease 1 mesh each side of each row

and work 22 rows even. Work should measure 7 inches from the 1st decreasing point. **Next 4 rows**, decrease 5 sts at each side of each row, break yarn.

FRONT. With Camels Hair ch 92 for 44 meshes and work same as back to 1st decreasing point. ***Next row**, decrease 1 mesh at underarm keeping the front edge even, work 3 rows even. Repeat from * 3 times. **Next row**, increase 1 mesh at underarm then increase 1 mesh at underarm every 4th row 3 times and work even until same length as back to underarm. **Next row**, decrease 3 meshes at underarm. **Next 4 rows**, decrease 1 mesh at underarm and work 14 rows even. Armhole should measure 5 inches from the 1st decreasing point. **Next row**, decrease 6 meshes at neck edge. **Next 4 rows**, decrease 2 meshes at neck edge. **Next 3 rows**, decrease 1 mesh at neck edge and shape shoulder same as back. Work other front to correspond.

SLEEVES. With Camels Hair ch 116 for 56 meshes and work 1 complete color pattern same as front and back of blouse, then work 4 rows Camels Hair. **Next row**, continuing color pattern decrease 4 meshes each side. **Next row**, decrease 1 mesh each side then decrease 1 mesh each side of every other row 4 times. Work 10 rows even. (Pattern should end with 2 rows of Rosewood.) **Next 7 rows**, work on 24 center sts only, break yarn.

Press each piece and with 1 strand of yarn begin weaving pattern up and down, over one mesh and under the next and reversing in the next row. On the Back and Sleeves begin in the center with Camels Hair and follow same color scheme as the meshes. The fronts begin at center edge with Camels Hair and follow same color scheme.

Sew seams and sew sleeves in position.

With Camels Hair crochet 6 rows of s c around entire blouse and sleeves. On right front work 10 buttonholes of ch 5, spacing them evenly.



Evening cape, soft and fluffy
knitted of Pompadour Yarn



Evening SWEATER

SIZE 14-16 (Illustrated on cover)

MATERIALS REQUIRED. American Thread Company "Dawn" Germantown Wool. 7 Balls, White or Colors. 1 Pr. #9 Bone Knitting Needles. 1 Bone Crochet Hook Size 2 or 3. 10 Buttons.

Measurements of Finished Garment. Bust 33 inches. Width across back at underarm 16 inches. Width across back at shoulder 13½ inches. Length from lower edge to underarms 10 inches. Sleeve, length from lower edge to underarm 5¼ inches.

Gauge. 11 sts=2 inches 13 rows=2 inches

PATTERN. P 1, K 1, P 1, K 1, repeat to end of row ending with P 1. **2nd row,** K 1, P 1, K 1, P 1, repeat to end of row ending with K 1. **3rd row,** repeat 1st row. **4th row,** repeat 2nd row. **5th row,** repeat 1st row. **6th row,** K across row.

BACK. Cast on 55 sts, work 1 inch even. **Next row,** increase 1 st each side then increase 1 st each side every inch 7 times, keeping pattern straight. Work even until back measures 10 inches from the beginning. **Next 2 rows,** bind off 3 sts at the beginning of each row. **Next 6 rows,** decrease 1 st at the beginning of each row. Work even until armhole measures 6¾ inches from the 1st decreasing point. **Next 4 rows,** bind off 5 sts at the beginning of each row. **Next 4 rows,** bind off 4 sts at the beginning of each row, and bind off remaining sts for back of neck.

FRONT. Cast on 33 sts and work in pattern for 1 inch even. **Next row,** increase 1 st at beginning of row then increase 1 st at same side (underarm) every inch 7 times and work even

until front measures 10 inches. **Next row,** bind off 4 sts at the beginning of row then decrease 1 st at armhole edge every other row 3 times. Work even until armhole measures 1½ inches from first decreasing point ending work at front edge. **Next row,** bind off 9 sts at neck edge then decrease 1 st at neck edge every 4th row 7 times, work even until armhole measures 6¾ inches and bind off shoulder same as back. Work other front to correspond reversing the underarm.

SLEEVES. Cast on 41 sts for lower edge, work pattern even for 1½ inches. Increase 1 st each side on next row then increase 1 st each side of every 4th row 6 times. Work even until sleeve measures 5¼ inches. **Next 2 rows,** bind off 4 sts at beginning of each row then decrease 1 st each side every 2nd row 3 times. Work even until sleeve measures 4¾ inches above 1st decreasing point. **Next row,** decrease 1 st each side then decrease 1 st each side of every other row twice. **Next 4 rows,** bind off 2 sts at the beginning of each row. **Next 4 rows,** bind off 3 sts at the beginning of each row and bind off remaining sts. Work other sleeve to correspond. Press each piece and sew seams matching pattern. Down left front work 3 rows of s c, 50 s c in each row. **Right front** beginning at lower edge, work 50 s c, ch 1, turn, 1 s c in 1st s c, * ch 2, skip 2 s c, 1 s c in each of the next 3 s c, repeat from * down front. **3rd row,** 1 s c in each s c and 1 s c in each st of ch. Around neck work 1 row of s c. Attach buttons and finish sleeves with pads if desired.

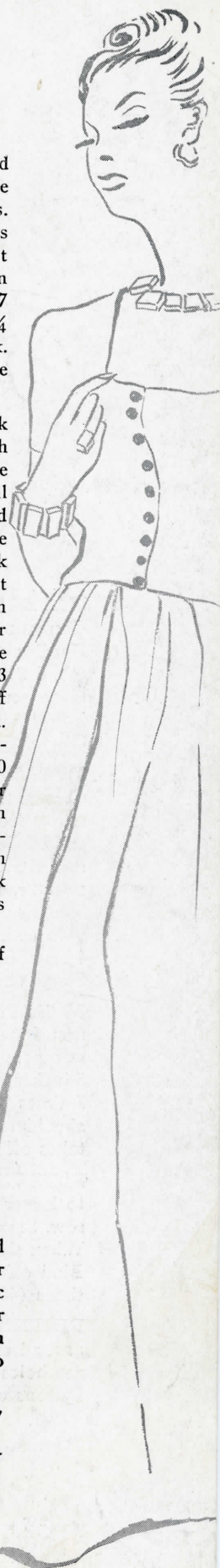
The blouse will be equally attractive made of "Dawn" Knitting Worsted.

Evening CAPE

MATERIALS REQUIRED. American Thread Company "Dawn" Pompadour Yarn. 6 Balls White. 1 Pr. Bone Knitting Needles #7 or 8. Crochet Needle #3.

Cast on 50 sts and K 1 row. **2nd row,** K 1, * over, K 1 repeat from * to end of row. **3rd row,** K 1, * drop the over st, K 1, repeat from * across row. **4th row,** K 40, turn and K back on 40 sts. **6th row,** K 35, turn and K back on 35 sts. **8th row,** K 30, turn and K back on 30 sts. **10th row,** K 25, turn and K back on 25 sts. **12th row,** K 20, turn

and K back on 20 sts. **14th row,** K 10, turn and K back on 10 sts. Repeat from the 2nd row for 51 patterns, bind off. Crochet 3 rows of s c around neck easing the neck to 13½ inches or length required. Around lower edge of cape * ch 2, skip the length of the 2 chs and sl st into cape, repeat from *. **Fringe:** Cut 10½ inch strands, take 2 strands, double these and knot over each loop. The cape may also be made with "Dawn" Shetland Floss or "Dawn" Saxony Yarn.



Slypon CARDIGAN

SIZE 16

MATERIALS REQUIRED. American Thread Company "Dawn" Germantown Wool. 12 Balls White or Colors. 1 Pr. Bone Knitting Needles #6. 1 Pr. Bone Knitting Needles #4. 1 Bone Crochet Hook #4. 6 Buttons ½ inch diameter.

Measurement of Finished Garment. Bust 34 inches. Across back 14 inches. Length from lower edge to underarm, 14 inches. Sleeve—Length to underarm 18½ inches. Gauge. 5 sts=1 inch 5 rows=1 inch

SWEATER BACK. With #4 needles, cast on 70 sts. K 1, P 1 ribbing for 4 inches. Change to #6 needles and start pattern: **1st row**, * K 2 tog. yarn over, slip one st, repeat from * across row. **2nd row**, same as first row, but always K the yarn over and slip one of row below as the 2 tog. of this row; slip the 2 tog. st of last row this time. This row reads same as first row. Repeat the 2nd row for body of sweater, work even for 10 inches. Bind off the first 4 sts on next 2 rows. While binding off sts work pattern as sts are cast off, for instance, row starts K 2 tog., yarn over do this and pull the st of tog. over, the yarn over and so on. Decrease 4 sts each side every 2nd row 4 times (8 decs.). Work edges even for 5½ inches. Shape shoulders: Bind off the first 4 sts on the next 8 rows. Bind off the 22 sts.

SWEATER FRONT. Cast on 80 sts. Work same as back to armholes: Bind off the first 6 sts on next 2 rows. Dec. one st each side every 2nd row 6 times, then open at centre of row for neck. Work the 2 pieces separately. Keep neck edge even for 5 inches, then shape as follows: Bind off the first 5 sts. Decr. one st every 2nd row 7 times at same edge. When armhole edge is 6½ inches from last decr., shape shoulders: Bind off the first 4 sts on next 4 rows that start at armhole side. This takes off all the sts on needle. Finish other piece the same.

SLEEVES. With #4 needles, cast on 32 sts K 1, P 1, ribbing for 3½ inches. Change to larger needles and decr. 6 sts across row. K every 4th and 5th sts tog. across row. Start pattern and incr. one st each side every 1½ inches 13 times (26 incrs.). When sleeve measures 18½ inches up through center from top of cuff, shape cap: Bind off the first 2 sts on next 2 rows. Decr. one st each side every 2nd row 20 times (40 decrs.). Bind off the 8 sts.

FINISHING. Seam shoulders tog. then with #4 needle for collar: Pick up 75 sts around entire neck edge, K 1, P 1, ribbing for 5 inches bind off. Sew sleeves into armholes and sew seams. Work one row s c at each side of neck opening. Sew buttons on collar as illustrated and finish with loops.





Slipon Cardigan is always a favorite. It has comfort and style

SIZE 10

MATERIALS REQUIRED. American Thread Co. "Dawn" Germantown Wool, White or Colors. 9—1 ounce Balls of Main Color and 1 Ball of Contrasting Color.

1 Pr. #1 Bone Knitting Needles for ribbing.

1 Pr. #3 Bone Knitting Needles for pattern.

1 Crochet Hook #1.

Gauge. 6 sts=1 inch. 9 rows=1 inch.

Measurements — Breast 28 inches. Across back — 12 inches.

Length of sleeve—17¾ inches.

PATTERN. K 1 row, * P 2 rows, K 2 rows, repeat from *.

BACK. On fine needles cast on 80 sts, K 2, P 2, continue ribbing for 2 inches. Begin pattern and work even for 9 inches. **Next 2 rows,** decrease 4 sts at the beginning of each row. **Next 6 rows,** decrease 1 st at the beginning of each row and work 3¼ inches even. **Next 8 rows,** bind off 5 sts at the beginning of each row and bind off remaining sts for neck.

FRONT. Work ribbing and 8 inches of pattern same as back. **Next 4 rows,** work pattern except the center 12 sts, on the 12 center sts K 1 row, P 1 row, K 1 row, P 1 row. Divide front in half and continue work on one side only, working the 6 neck sts in stockinette st (K 1 row, P 1 row). When work measures 9 inches to underarm, work even at center and decrease 2 sts every other row at underarm. **Next 6 rows,** decrease 1 st every other row at underarm and work 2½ inches

even. **Next row,** bind off 6 sts at neck side. **Next 14 rows,** decrease 1 st every other row at neck side, at the same time work shoulder side even until it measures same as back to shoulder and bind off 5 sts at shoulder every other row 4 times working even at neck after the 7 decreases are made. Work other side to correspond.

SLEEVE. On small needles cast on 40 sts and work 2 inches of ribbing. Work pattern for 6½ inches then increase 1 st each side every 6th row 8 times. Work even until sleeve measures 15 inches or is the desired length. **Next 2 rows,** decrease 3 sts at the beginning of each row. **Next 36 rows,** decrease 1 st at the beginning of each row, bind off and work other sleeve to correspond.

COLLAR. Cast on 14 sts and work pattern for desired length. Around neck opening, with color work 1 row of s c. **2nd row,** 5 s c, ch 2, skip 2 s c, 1 s c in each remaining s c to lower edge of side, work other side to correspond.

With color crochet 2 cords about 15 inches long, finish one end of each with tiny wool doll by cutting 7—4 inch strands, double these and tie about ¼ inch from top of head. Take 4 strands for each arm and tie at ends. Tie the remaining strands through the center. Double each cord and sew in position as illustrated. Sew seams and attach collar. Fasten the 2 buttons together with yarn and slip through button-hole.

This sweater may also be made with "Dawn" Knitting Worsted.

Girl's STRIPED SWEATER



Girls love stripes—this one will be a welcome addition to her wardrobe





When the winds blow, Hooded
Cardigans are "Cumfy"—knitted
of "Dawn" Germantown Yarn

Girl's

SPORT CARDIGAN WITH HOOD



SIZE 6-8

MATERIALS REQUIRED. American Thread Company "Dawn" Germantown Wool. 10—1 oz. Balls. 1 Pr. Bone Knitting Needles #6. 1 Bone Crochet Hook #4 or 5. 6 Buttons.

Measurements for Finished Garment. Breast—24 inches. Across back—10½ inches. Length of sleeve at underarm—13 inches.

Gauge. 5 sts=1 inch 7 rows=1 inch

Back and fronts are worked in the following pattern: **1st row**, K 2, P 2. **2nd row**, K across row. The sleeves are worked in stockinette st (K 1 row, P 1 row).

BACK. Cast on 70 sts and work even for 8 inches. **Next 2 rows**, bind off 5 sts at the beginning of each row and work even until armhole measures 6 inches. **Next 6 rows**, bind off 6 sts at the beginning of each row and bind off remaining sts for back of neck.

FRONTS. Cast on 36 sts and work even for 8 inches. **Next row**, at underarm side bind off 6 sts and work even until armhole measures 3½ inches. **Beginning next row**, at neck edge, bind off 2 sts each time until 18 sts remain. Work even until armhole measures 6 inches then bind off 6 sts every other row at armhole edge until all sts are bound off. Work other front to correspond reversing the shaping.

SLEEVES. Cast on 24 sts and work 2 inches in ribbing of K 1, P 1. **Next row**, start stockinette st increasing in every st (48 sts). Work even until sleeve measures 12 inches from beginning. **Next 2 rows**, bind off 5 sts at the beginning of each row and work even for 2½ inches. **Next 18 rows**, decrease 1 st at the beginning of each row and bind off remaining sts.

HOOD. Cast on 98 sts and work in pattern for 2½ inches. Work even in stockinette st for 5 inches more, bind off. Sew seams of sweater and sew sleeves in position, placing any fullness there may be in center. Crochet 5 rows of s c around lower edge of sweater and 1 row of s c around neck. On left front work 5 rows of s c. On right front work 2 rows of s c. **Next row**, * ch 2, skip 2 s c, 1 s c in each of the next 8 s c, repeat from * down front and work 2 more rows of s c. Fold hood in half. Sew seams along bound off edge for back of hood and sew hood to sweater.

This cardigan may also be made of "Dawn" Knitting Worsted.

Double Moss PATTERN

SIZE 8-10

MATERIALS REQUIRED. American Thread Company "Dawn" Shetland Floss. 7 Balls White or Colors. 1 Pr. Bone Knitting Needles #3.

2 Small Buttons.

Measurements for Finished Garment. Breast—27 inches. Across back 11½ inches. Length of sleeve at underarm 5 inches.

Gauge. 7 sts=1 inch 10 rows=1 inch

DOUBLE MOSS PATTERN. 1st and 2nd rows, K 2, P 2, repeat across rows. 3rd and 4th rows, P 2, K 2, repeat across rows.

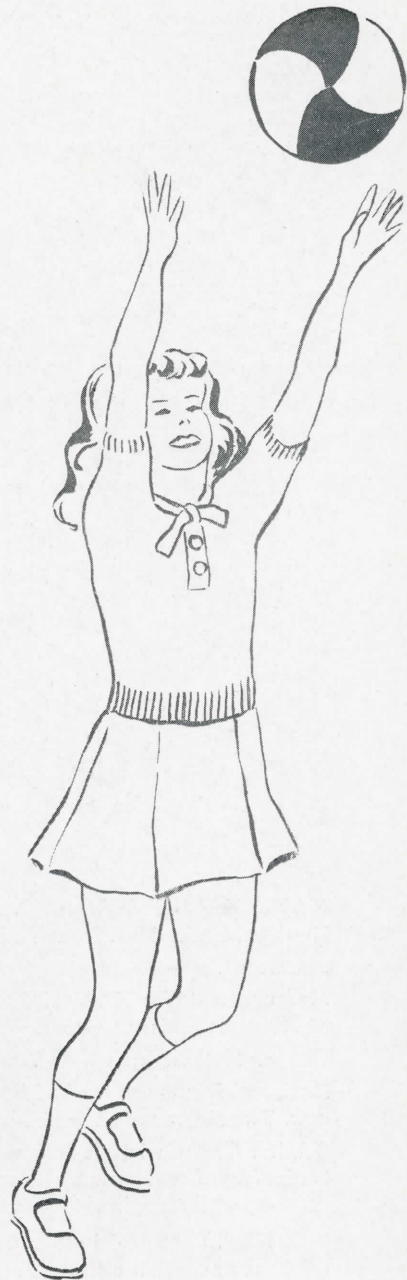
BACK. Cast on 102 sts. Work in ribbing of K 1, P 1, for 2½ inches. Increase 10 sts evenly spaced across row. Work in double moss st for 6 inches more. Bind off 6 sts at beg. of next 2 rows, then 4 sts at the beg. of next 2 rows, then 1 st at beg. of every row until 84 sts remain. When armhole measures 6 inches bind off 7 sts at beg. of every row until 28 sts remain.

FRONT. Cast on 101 sts and work in ribbing of K 1, P 1, for 2½ inches. Change to double moss st and increase 10 sts evenly spaced across row. When work measures 7 inches, work 51 sts and place on st.-holder. K 1, P 1, ribbing for next 10 sts. (Center front.) Work across row 51 sts. Continue working these sts with 10 center-edge sts in K 1, P 1, to neck. After first inch, work buttonhole as follows: Rib for 3 sts, bind off 4, rib for 3. On return row cast on the 4 sts directly above those cast off. Repeat buttonhole every 2 inches. When front measures 8½ inches, work armhole same as back. When armhole measures 3 inches, bind off center 10 sts then 2 sts each time at neck edge 4 times then 1 st until 28 sts remain. Then rib all in K 1, P 1 to shoulder. When armhole measures 6 inches, bind off 7 sts each time at armhole side until all sts have been bound off. Place sts from st.-holder to needle and work other side picking up the 6 sts in back of center front. Work other side omitting buttonholes.

SLEEVES. Cast on 62 sts K 1, P 1, ribbing for 1½ inches. Change to double moss st. Increase 1 st each side every ½ inch 6 times. Work ½ inch and decrease 6 sts at beg. of next 2 rows. Work even until sleeve measures 6 inches at underarm. Bind off.

NECK BAND. Cast on 8 sts and K 1, P 1 for 22 inches.

ASSEMBLING. Sew all seams, gathering sleeves at top. Sew one edge of neckband to neckline of blouse, allowing 6 inches to hang free at each end at front for tie.





A favorite with the little Miss—
knitted in Double Moss Pattern



Child's

SWEATER

SIZE 5

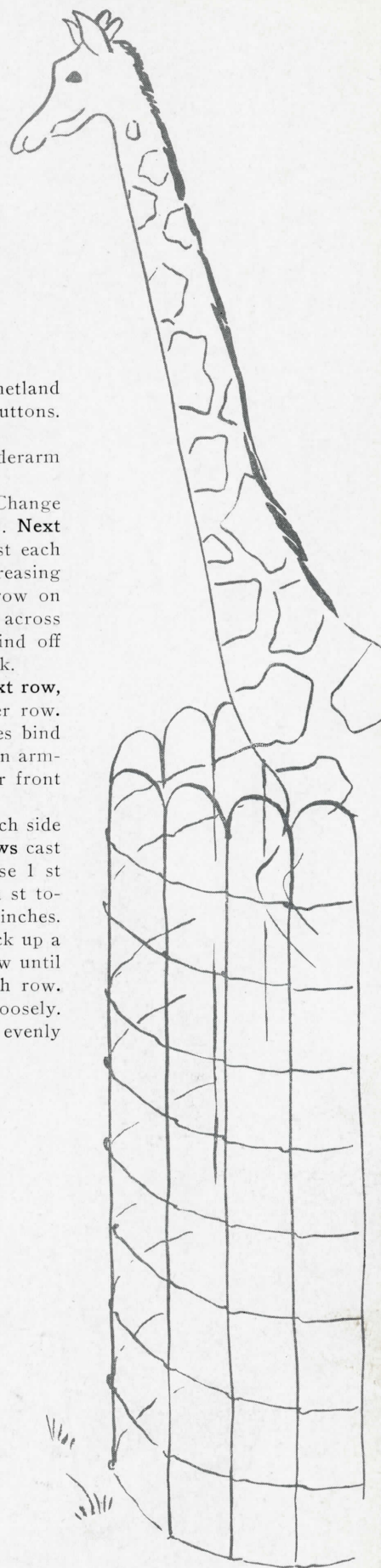
MATERIALS REQUIRED. 7 Balls American Thread Company "Dawn" Shetland Floss. 1 Pr. #1 Bone Knitting Needles. 1 Pr. #3 Bone Knitting Needles. 7 Buttons. Gauge. 8 sts=1 inch 10 rows=1 inch
Measurements—Length from top of shoulder 14 inches. Width all around at underarm 24 inches. Underarm length of sleeve 12 inches.

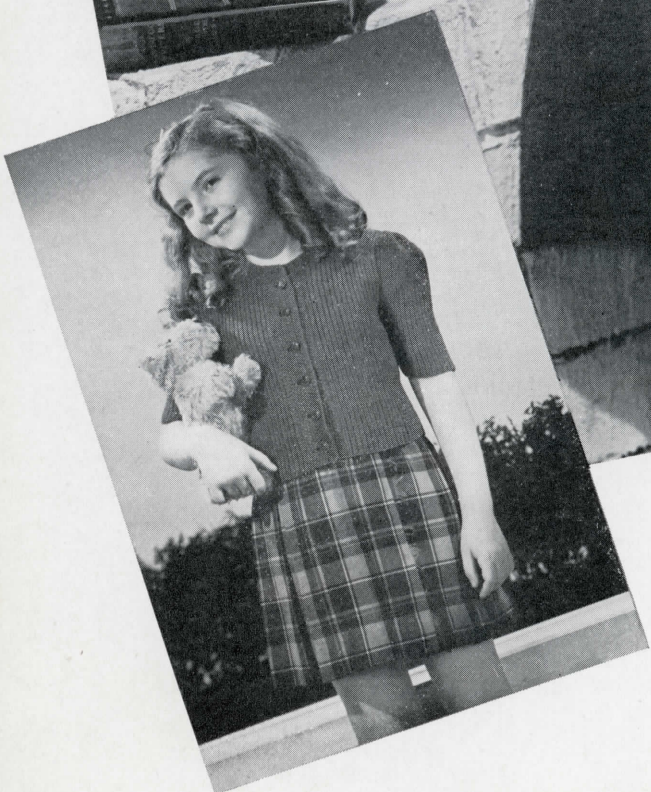
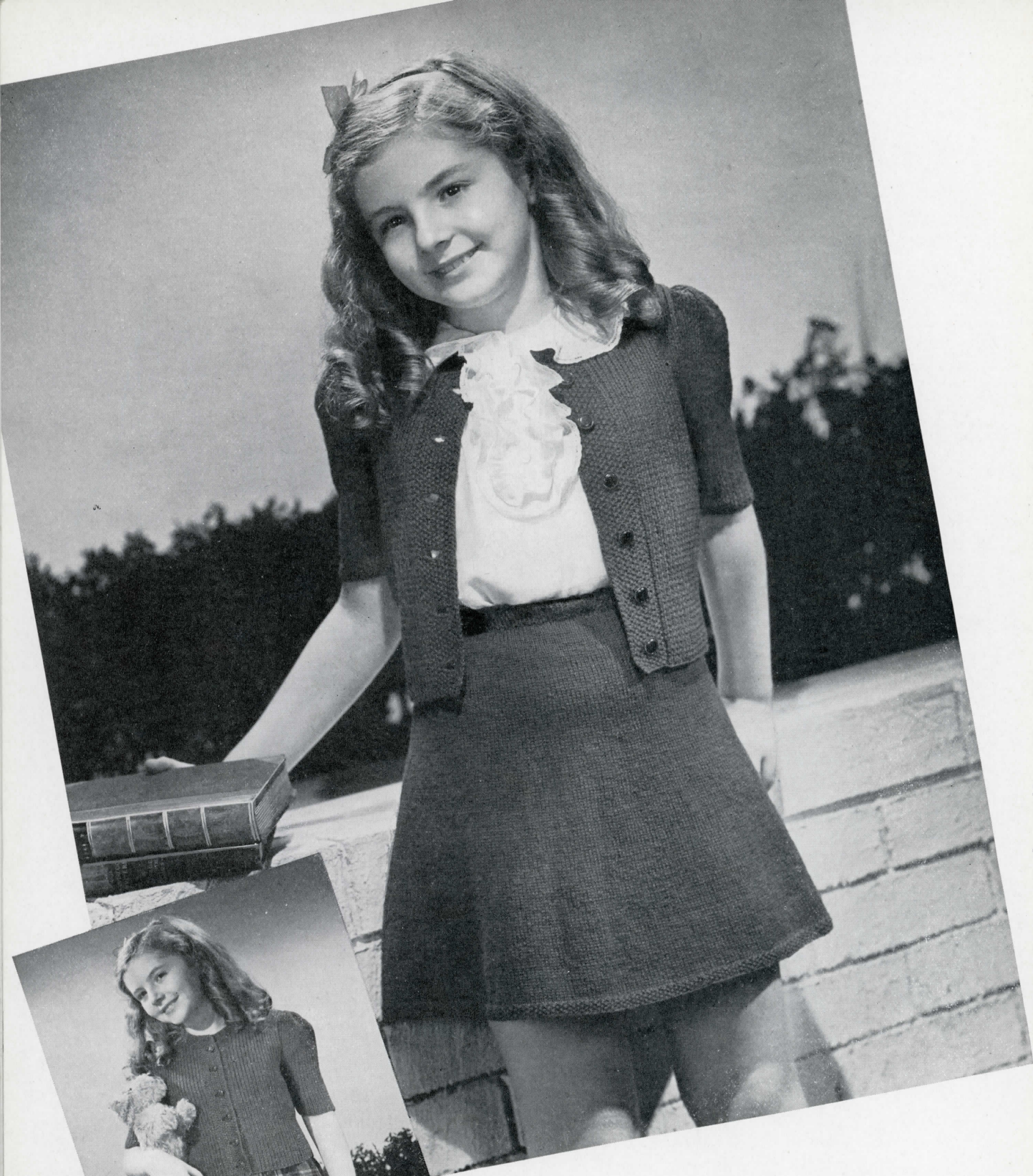
With #1 needles cast on 96 sts, and work in ribbing of K 1, P 1, for 2½ inches. Change to #3 needles and work stockinette st for 6½ inches (9 inches from beginning). **Next 2 rows**, bind off 5 sts at the beginning of each. row. **Next 10 rows**, decrease 1 st each side every K row (76 sts). When armhole measures 2 inches from the 1st decreasing point, decrease to 75 sts and work yoke in the following pattern working 1st row on wrong side of work. **1st row**, K 3, P 1, K 1, P 1, repeat to end of row. **2nd row**, K across row. Repeat these two rows until armhole measures 5 inches. **Next 4 rows**, bind off 12 sts at the beginning of each row and bind off remaining 27 sts for back of neck.

FRONT. On #1 needles cast on 48 sts and work same as back to underarm. **Next row**, bind off 5 sts at underarm. Next 10 rows decrease 1 st at underarm every other row. When armhole measures 2 inches begin yoke. When armhole measures 3½ inches bind off 8 sts at front edge then decrease 1 st at neck edge very other row 5 times. When armhole measures 5 inches bind off 12 sts every other row for shoulder. Work other front to correspond.

SLEEVE. On #3 needles cast on 20 sts, work in stockinette st increasing 1 st each side of every K row until there are 60 sts on needle and work 2 rows even. **Next 2 rows** cast on 5 sts at the beginning of each row and work even for 2 inches, then decrease 1 st each side every inch 10 times. **Next row**, decrease by working every 7th and 8th st together thus decreasing to 44 sts. Change to #1 needles and work in ribbing for 2½ inches.

COLLAR. Work 1 row of s c around neck edge (63 sts) and with #3 needles pick up a loop of each s c and work in yoke pattern increasing 1 st each side every 3rd row until collar measures 1¾ inches. **Next 4 rows**, bind off 2 sts at the beginning of each row. **Next 2 rows**, decrease 1 st at the beginning of each row. Bind off remaining sts loosely. Work 2 rows of s c around collar and 5 rows on fronts, working buttonholes evenly spaced on right front in the 3rd row of crochet.





Wear them together or separately—ideal for School Days

Child's CARDIGAN SUITS

SIZE 6-8

MATERIALS REQUIRED. American Thread Company "Dawn" Shetland Floss. 10 Balls White or Colors. 1 Pr. Bone Knitting Needles #3. 1 Circular Needle #3. Measurements of Finished Garments. Breast 25 inches. Waist 22 inches. Across back 11 inches. Sleeve—Length from underarm 4 inches. Skirt—Waist 24 inches. Length of skirt—15½ inches.

Gauge. 15 sts=2 inches 18 rows=2 inches

CARDIGAN

BACK. On #3 needles cast on 94 sts. Entire cardigan is worked in K 1, P 1, ribbing. Work 1 inch even, next row increase 1 st each side then increase 1 st each side every inch 7 times. At 8½ inches bind off 5 sts at beginning of next 2 rows, 2 at beginning of next 2 rows, then 1 st at beginning of row until 84 sts remain. Work even until armhole measures 6 inches. Then bind off 5 sts at beginning of every row until 34 sts remain. Bind off.

FRONT. Cast on 48 sts. Mark center edge. Work 10 sts at this edge in seed st to neck, and remaining sts in rib pattern as on back. Make buttonhole after first inch and every 2 inches thereafter as follows: Seed 3, bind off 4, seed 3. On return row, cast on 4 sts directly above those cast off. When piece measures 8½ inches at armhole side, bind off 5 sts then 2 sts, then 1 st until 47 sts remain. When armhole measures 3 inches, bind off 10 sts at neck edge, then 2 sts at neck edge row until 25 sts remain. When armhole measures 6 inches bind off 5 sts at armhole side each time until all sts have been decreased. Work other front to correspond omitting buttonholes.

SLEEVES. Cast on 58 sts and increase 1 st each side every ½ inch for 4 inches. Bind off 5 sts at beginning of next 2 rows, and work even until sleeve measures 10 inches from beginning. Bind off. Work 2nd sleeve to correspond.

ASSEMBLING. Sew shoulder, underarm and sleeve seams. Gather tops of sleeves to measure 3 inches, starting 2 inches below right-hand point and ending 2 inches below left-hand point. Join to armhole. Pick up about 90 sts around neck and work in seed st for 1 inch and bind off. Work 1 row s c up each front and around neck.

SKIRT

On #3 circular needle cast on 310 sts. Join, being careful not to twist, and work in seed st for ½ inch.

Work 3 inches even and decrease 25 sts in 1 round spacing decreases evenly. Work 2 inches even and decrease 25 sts in 1 round. Work 2 inches even and decrease 25 sts in 1 round. Work 2 inches even and decrease 20 sts in 1 round. Work 2 inches even and decrease 20 sts in 1 round. Work 2 inches even and decrease 15 sts in 1 round. Work 1 inch even and decrease 15 sts in 1 round. K 1, P 1, ribbing for 1 inch. Crochet zigzag casing for elastic on inner side of waistline as follows. Join yarn, * ch 5, skip 2 sts, sl st in st ½ inch below, ch 5, skip 2 sts, sl st in next st ½ inch above, repeat from *.

SUSPENDERS. On straight needles cast on 12 sts. K 1, P 1, ribbing for 18 inches and bind off. Fasten ends in place on skirt.



TWIN SET (Continued from page 4)

2nd, 3rd and 4th rows, ch 1, turn, 1 s c in each st of front and neck. 5th row, ch 1, turn, 1 s c in each of the 1st 8 s c, ch 4, skip 4 sts for buttonhole, * 1 s c in each of the next 19 s c, ch 4, skip 4 sts, repeat from * 3 times (5 buttonholes) 1 s c in next st, 3 s c in corner, 1 s c

in each s c to lower edge of left front. Repeat 2nd row 4 times ending at lower left front, work 3 s c in corner, 1 s c in each row of border, 1 s c in each s c at lower edge and in each row of right border, join and fasten yarn. Finish sleeves with shoulder pads if desired.

EYELET CABLE PATTERN (Continued from page 8)

Decrease 1 st at end of each row until 91 sts remain. Next row work across 1st 44 sts, placing these on st holder, bind off 3 sts, continue in pattern across remaining 44 sts. When work measures 7 inches from 1st row of armhole shaping, bind off 6 sts every other row on shoulder side 4 times, 7 sts once. Bind off remaining 12 sts. Work other side to correspond.

FRONT. Cast on 101 sts. Work same as back for 6 inches, increasing 1 st at both ends every inch, after the 1st 1½ inches until there are 111 sts on needle. At 6 inches work the 1st 2 and last 2 K 3 ribs in pattern and on every 13th row add 2 more patterns at both ends until entire front is patterned. At the same time continue increasing every inch until you have 119 sts. Shape armholes same as back until there are 97 sts. When work measures 5 inches from 1st row of armhole shaping, work across 38 sts, place on st holder,

bind off 21 sts. (Neck shaping) work on remaining 38 sts, decrease 1 st every other row on neck side until 31 sts remain. When armhole measures 7 inches, bind off shoulder same as back. Work other side to correspond.

SLEEVES. Cast on 77 sts, work in ribbing for 1¼". Then work in pattern st increasing 1 st every ½" on each end until there are 87 sts. When work measures 4 inches, bind off 3 sts at beginning of next 2 rows then decrease 1 st at end of each row until 25 sts remain. Bind off.

FINISHING. Sew up under arm and shoulder seams. Sew sleeves seams and sew sleeves in place, forming 2 tucks at top. Work 2 rows of s c at neck and back opening. On second row of s c take up back loop of st only. Sew zipper in place. Finish with shoulder pads if desired.

Things to Remember

Needle Gauge. Before starting a garment work a swatch using the same yarn and needles called for in instructions, to determine whether work measures the same number of stitches to the inch as the scale given. If not, alter the size needle accordingly.

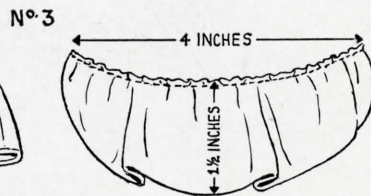
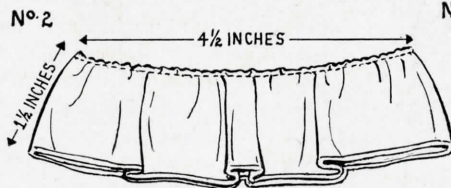
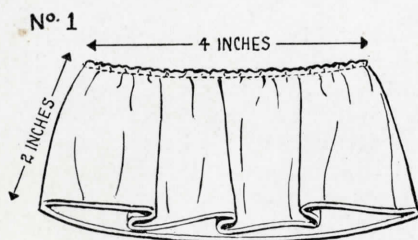
Buy Enough. It is very important to buy enough "Dawn" yarns of the same dye lot number necessary to finish the article, as it is almost impossible to dye two lots in exactly the same shade.

Blocking New Garments. On a damp cloth, pin the garment flat in exactly the size and position you wish it to remain, stretching it if it has contracted and easing it in shape if it has stretched. Place another

damp cloth over the garment and press lightly with a moderately hot iron. Remove pins after about 30 minutes leaving the garment between the cloths until thoroughly dry.

Washing of Hand Made Garments. If the garment fits perfectly, measure it carefully so it can be re-blocked to the same size. Choose a good soap and make lukewarm suds, squeeze and press garment gently, never rub or wring. Rinse in lukewarm water several times. Squeeze out as much water as possible and roll in a turkish towel to absorb all excess moisture. Lay garment on a flat surface, push in position and pin to correct size, allow to dry. Never dry Wool garments in the sun.

Ribbon Shoulder Pads



A NEW MEMBER OF
THE DAWN FAMILY

of Hand Knitting Yarns



Article W21 "Dawn" Pompadour four fold yarn with rayon lacing is ideally suited for infants' wear — booties, sacques, jackets, sweaters, hoods also crib or carriage blankets and throws.

May also be used for ladies' sweaters and shawls.

Makes up into soft warm, cozy and pleasing garments.

Colors:—"White", "Baby Pink", "Baby Blue", also a pleasing new blend of shades known as "Baby Pastels".



TRADE

MARK

AMERICAN THREAD COMPANY
260 WEST BROADWAY • NEW YORK, N. Y.

BOOK G

10 CENTS

THE Sweater Book



DESIGNS BY CECILIA VANEK



AMERICAN THREAD COMPANY
260 WEST BROADWAY, NEW YORK, N. Y.



77.13/2